

Annual Report 2022/2023

*Celebrating the Successful Completion of the
Forward Into the Future Capital Campaign*



**faison
center**





May 16, 2019
Ribbon-cutting ceremony to open
Flo and Tony Guzman Community Center

Contents

- 3. Introduction
- 4. Forward Into the Future Timeline
- 6. Kirshner Mihaloff Hall
- 8. Flo and Tony Guzman Community Center
- 10. Markel Hall
- 12. Outdoor Learning Center
- 14. Pioneer Hall
- 16. Peninsula Campus
- 19. Financial Summary
- 20. Forward Into the Future Donors
- 22. The Faison Fund Donors
- 29. Tributes
- 31. The Faison Center Board Members and Advisory Council
- 32. Graduation Time

Introduction

"If you don't know where you are going, you will end up someplace else." Yogi Berra would be pleased to know that his astute observation does not apply to The Faison Center. In 2016, we defined a vision for the future of Faison and created a roadmap of where we wanted to go, how we would get there and when we would arrive. In the pages that follow, we look at that journey and celebrate the successes along the way.

Where did we want to go? We wanted to create a campus in Richmond where all of our programs were in one location, a campus that allowed our programs to grow and expand, a campus that was welcoming to all who we served and all who visited, a campus with facilities that were as exceptional as our services.

How would we get there? We knew that our vision was bold and would require a tremendous amount of support from donors. Therefore, we began our Forward Into the Future campaign in 2017 to raise the funds necessary to make our vision a reality. From the moment this campaign began until the moment it concluded in 2022, our donors rallied to the call and generously invested in our mission.

When would we arrive? In 2018, we opened a new wing of Kirshner Mihaloff Hall to increase our enrollment capacity of The Faison School. In 2019, we opened the Flo and Tony Guzman Community Center to focus on health and wellness for those we serve. In 2020, we opened Markel Hall to house our innovative Early Education Center for the toddlers on our campus. In 2021, we opened our unique Outdoor Learning Center to provide additional outdoor space for education and fun. Finally, in 2023, we opened Pioneer Hall for our Adult Services programs and Behavioral Health Clinic.

These are all visible measures of our success, but everyone who supported this campaign understands that this was not about beautiful new buildings. Instead, it was about what goes on inside of these buildings that matters most—pursuing our mission to provide children and adults with autism and other developmental disabilities the best opportunity to improve their life's journey. Thank you all for [investing in our mission](#) and supporting those who we serve.

Sincerely,

W. Brian McCann
President and CEO

Forward Into the Future Capital Campaign Timeline

2018

KIRSHNER MIHALOFF HALL



The Faison School Expansion

2019

FLO AND TONY GUZMAN
COMMUNITY CENTER



Health and Wellness Programs
Community Events

2020

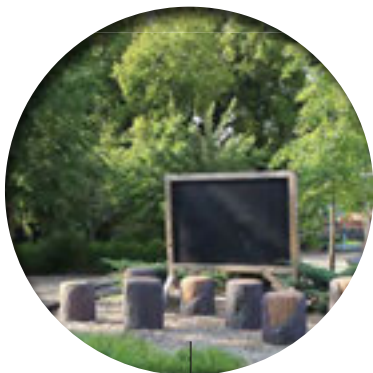
MARKEL HALL



Early Education Center
Meeting Spaces

2021

THE OUTDOOR
LEARNING CENTER



Science and Nature Education

2023

PIONEER HALL



Adult Day Services
Center Based ABA Clinic

Founded as the Faison School in 1999 with just a handful of toddlers, what is now known as The Faison Center has grown into a comprehensive suite of services and programs for individuals with autism. In 2017, driven both by local demand and a growing trend of autism diagnoses, Faison undertook an ambitious fundraising campaign to significantly expand its facilities on the Richmond campus to serve more individuals with autism of all ages all along the spectrum. This five-year effort resulted in four brand-new buildings and an outdoor learning space.

“We cannot emphasize enough how proud we are of the lifespan of services Faison offers, and of the team that provides those services daily. Now, with the addition of Pioneer Hall, Faison’s Richmond campus is complete, allowing for services to be provided to more people with autism and related challenges. The impact of the Faison Center on clients and their families is life changing for them and heartwarming for everyone involved with Faison.”
- Richard Davis, a Faison Board Member

Kirshner Mihaloff Hall

Forward Into the Future Phase 1

Lower, Middle, and Upper School

Life Skills Program

Independent Learner Program

- 20 students graduated in 2023
- Worked with [SPARC](#) to create a theatre curriculum for students across a variety of school programs
- 200+ hours of enrichment activities offered to students throughout the year
- 2,308,776 trials of instruction delivered to students school-wide

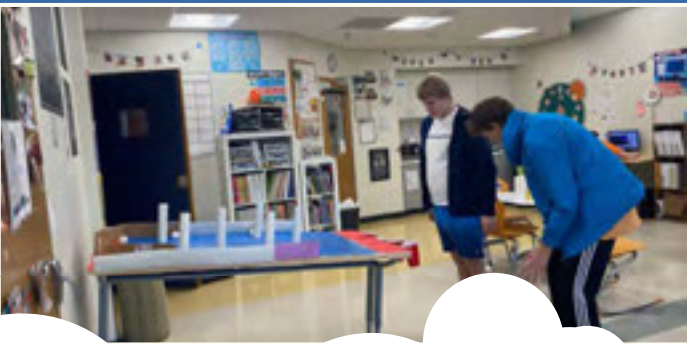


In May 2018, a new 18,000-square-foot wing was added to the original building of The Faison School. As we celebrated this first phase of the Forward Into the Future capital campaign, the entire building was dedicated as Kirshner Mihaloff Hall. This expansion increased enrollment capacity to allow The Faison School to serve up to 200 students from over 35 jurisdictions across Virginia. We have come a long way since the school began with just one student, Brittany Faison!

The vast majority of the students we serve are severely impacted by autism. As a result, they are unable to receive their education in the public school setting. These public school systems turn to us to educate these students because of our experience and expertise. Over the years, the demand for our services has continued to increase. The new space in Kirshner Mihaloff Hall helped to meet that demand with eight new classrooms, a playground filled with adaptive equipment for our special-needs population, and, for the Life Skills program, a central multi-purpose room surrounded by functional learning areas such as a teaching kitchen, a studio apartment-style living space, a

library, and an exercise space. The unique design of this building allows our staff to create new and impactful learning opportunities for our students. According to Jonathan K., a teaching assistant in the Life Skills program of The Faison School, "It is extremely fulfilling to be able to provide experiences that wouldn't usually occur in the students' day-to-day routine if they did not have Faison in their lives."

For those who have visited our campus, they quickly realize that what we do in the hallways of Kirshner Mihaloff Hall is about much more than just education. It is about dedication, love and a commitment unlike any other to all of our students. As Jonathan also noted about his work at The Faison School, "Knowing that you're making students feel safe and loved, that's the most fulfilling part."



"Faison does a really good job motivating the [students] and showing them their future is endless and that there's a place at the table for everyone."

- Kat S., a Faison Teaching Assistant in the EILC

Flo and Tony Guzman Community Center

Forward Into the Future Phase 2

Health and Wellness Programs

Community Events

- Physical education activities provided for over 120 students and clients each week
- From community events, including the Notre Dame Club, to training with the [Henrico Fire Department](#), graduation, and our annual Gala, the Flo and Tony Guzman Community Center is a central hub of activity



In May 2019, The Flo and Tony Guzman Community Center opened. This 10,000-square-foot community center was built to provide a place for our students to be active and a place for the surrounding community to gather for a myriad of events.

Individuals with autism have higher rates of obesity, depression, anxiety, stomach issues and sleep problems. Therefore, maintaining healthy and active lifestyles is especially important for the individuals who we serve. Our Community Center provides a flexible space where our toddlers, students and adults can exercise, engage in sports activities, and have fun.

This space, though, is more than just a place for exercise, activity and well-being. It is a place for gathering—for Faison and for the community. Our community supports us, and we want to support our community. Therefore, Faison is committed to making this space available to community groups and other non-profit organizations. In recent years, it has hosted an international conference of the Organizational Behavioral Management

Network, town halls for Autism Speaks, the Richmond Bridge Association, children's birthday parties, Faison's own Action for Autism gala, and community trainings with local law enforcement about how to interact with individuals with autism and other disabilities.

Nicole R., a Faison physical education teacher, reflected on the most recent law enforcement training at Guzman: "It was an awesome day, there were a ton of officers here. For some of our students, it was really unique to have that opportunity to engage and interact with a person in uniform in a non-intimidating situation. There's really no other way to do that without somewhere like Faison to facilitate that interaction."



"To have this space and all this equipment to provide students with things they might not encounter anywhere else, that's so meaningful. For example, seeing a student who's never thrown a frisbee before grow to love it, that's so special."

- Nicole R., A Faison School Physical Education Teacher

Markel Hall

Forward Into the Future Phase 3



[Diagnostic Services](#)

Early Education Center (EEC)

Speech Services

- 4 EEC graduates moved on to public school settings
- Multiple field trips off campus and several volunteer activities throughout the year
- Clinicians in the Diagnostics program completed 47 Autism Diagnostic Observation Schedule (ADOS-2) assessments



In May 2020, Markel Hall, the third building added to the Richmond campus for the capital campaign, was completed. A 16,000-square-foot two-story building, Markel boasts a welcoming foyer and four large, flexible-use classrooms on the first floor, and a multi-functional boardroom, patio, and administrative offices on the second floor. A large playground on the south side of the building was designed specifically for the toddlers who occupy our first-floor classrooms.

Markel Hall houses Faison's Early Education Center (EEC) which serves children ages 16 months to five years old. There is ample research demonstrating the importance of early diagnosis and intervention to improve outcomes for children with autism. The younger they can begin receiving autism specific services, the more likely they are to develop skills and behaviors that will help them throughout their lives.

Our curriculum integrates toddlers with autism with their peers without disabilities as part of an expanded partnership with Westhampton Day School. That partnership allows Faison to blend the

toddlers who we serve into integrated classrooms where they learn alongside West Hampton's preschoolers. This partnership enables those in our Early Education program to participate in more traditional classroom settings while also continuing to benefit from individualized instruction.

The impact of this kind of learning environment is tremendous. Kristen M., a program manager with the EEC, has seen just how powerful the experiences are for children in the EEC and Westhampton Day School: "Academically, socially, and emotionally, I don't think (my student) would have been able to grow that much without our inclusive program. And, the Westhampton kiddos learned to embrace his differences and to love him for who he was, which was so sweet."



"It's great that Westhampton kiddos get to see that everybody is different, it's okay to be different, and to embrace people for their differences."

- Kristen M., EEC Program Manager

Outdoor Learning Center

Forward Into the Future Phase 4

Therapeutic Programs

Nature Education

- New equipment installed to complete the OLC: the obstacle course, sandplay structure, and see-saw
- With the opening of Pioneer Hall, the OLC has now become a focal point and "bridge" to tie the whole campus together



In May 2021, Faison's Outdoor Learning Center (OLC) was built to serve all age groups and all programs.

The OLC is comprised of multiple activity stations that are constructed with materials found in nature like wood, rock, and sand. These stations support dynamic, gross motor activity and allow our staff to work with all who we serve on their sustained activity level, movement, balance, and endurance. One of the OLC's key components is the Smithfield Foods Overlook, a 500-square-foot multi-purpose deck and outdoor classroom that overlooks the protected watershed of Jordan's Branch. In addition to the Overlook, there are multiple gathering spaces, such as the "tree stump theatre," which develop students' communication, social development, and social expression skills. Additionally, a water flow system and splash tables emphasize problem solving skills and allow our students the opportunity to explore and discover new interests.

Shep R., the Executive Director of [Beyond Boundaries](#), has utilized the OLC to connect with students for several years. His organization guides

participants with disabilities on outdoor adventures, and oftentimes he uses the OLC as the conduit to do so. "I really love working with students who haven't done the things we offer before because there are so many benefits to exploring nature," he said. "And to see the excitement, the learning, and the growth happen firsthand in the programs and activities, that's been awesome and unforgettable."

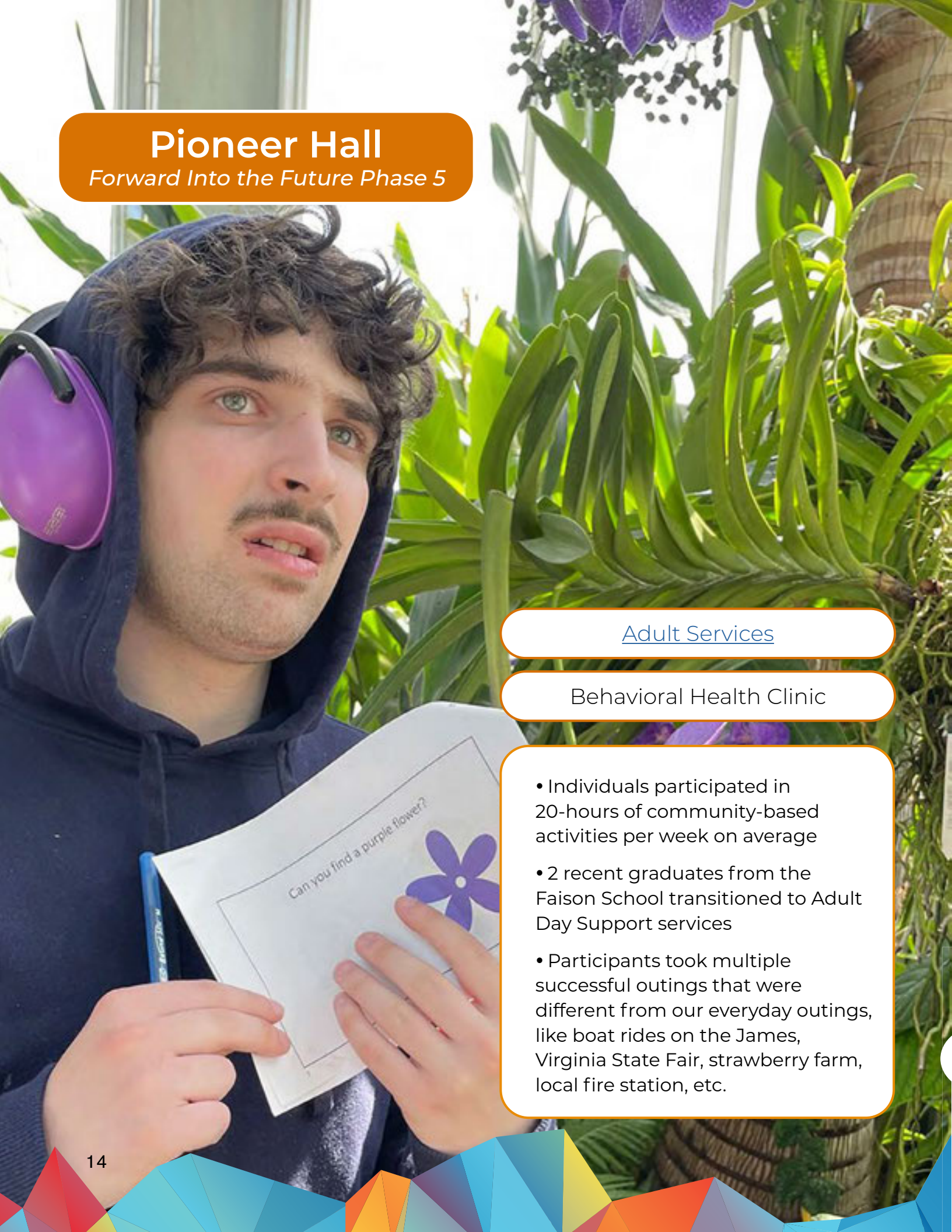


"I love holding adventure programs with Faison both on and off campus. On campus, the OLC offers a wide range of outdoor opportunities for us. We learn how to set up a campsite, construct tents on the sand, and be good environmental stewards. We practice fishing skills by tying knots and then casting for plastic fish. The OLC is such a great resource to have."

- Shep R., Executive Director, Beyond Boundaries.

Pioneer Hall

Forward Into the Future Phase 5



Adult Services

Behavioral Health Clinic

- Individuals participated in 20-hours of community-based activities per week on average
- 2 recent graduates from the Faison School transitioned to Adult Day Support services
- Participants took multiple successful outings that were different from our everyday outings, like boat rides on the James, Virginia State Fair, strawberry farm, local fire station, etc.



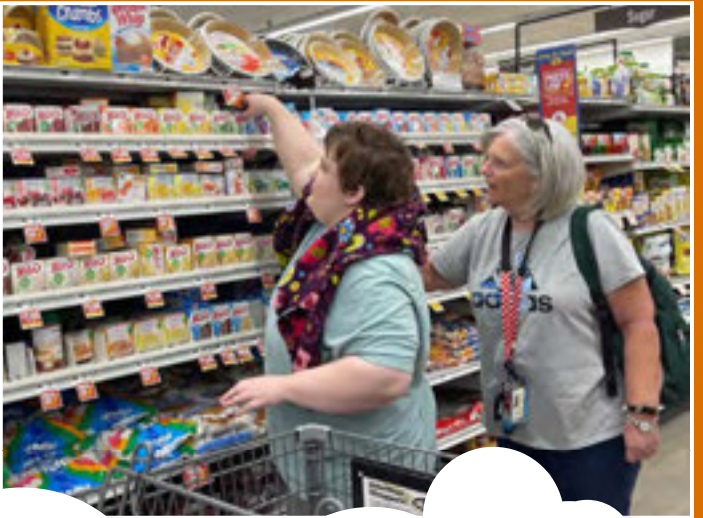
Completed in 2023, Pioneer Hall is the most recent addition to The Faison Center's Richmond campus and is the final project in the multi-year Forward Into the Future campaign. This two-story, 12,000-square-foot building on Willow Lawn Drive completes Faison's ambitious campus expansion plan.

Pioneer Hall's first floor includes three classrooms and a large gathering space for our full-day clinical support to individuals ages 5 to 22 in our Center-based Applied Behavior Analysis clinic. The top floor will house Faison's Adult Day program. This space features an open community gathering spot called "The Paige Edmunds Clubhouse", a shared teaching kitchen, a dining area and three classroom spaces for engagement activities.

When an individual with autism ages out of public education, typically at age 22, they have limited opportunities for meaningful, non-work activities. These limitations lead many of these adults to spend most of their time at home, unable to access their community or engage with their peers. The Paige Edmunds Clubhouse at Pioneer Hall will give

participants in Faison's Adult Day program a state-of-the-art space to socialize, learn valuable life skills, and participate in volunteer and leisure activities in their community.

Overall, this space will complement our other adult services: the Faison Residence and the Family Partner Program. All of Faison's adult programs aim to ensure that adults with autism—whether they are able to live semi-independently or whether they need significant support—are provided the best opportunity to improve their life's journey.



"The Faison Center, and now the Family Partner Program, let us be a family. I don't know that we would have been equipped to give our son everything he needed for as long as he did without all of the progress that he made there." - Todd R., parent of former Faison School student who is in the Family Partner and Adult Day programs

Peninsula Campus

Lower, Middle, and Upper School

Behavioral Health Clinic

Early Education Center (EEC)

- 1 graduate and 1 new locality served: King and Queen County
- Established partnerships with Christopher Newport University Athletic Department and the SPCA
- Hosted successful community-based, fundraising event on campus



Although not officially part of the Forward Into the Future capital campaign, The Faison Center also expanded services in 2017 with the Peninsula School in Newport News. In 2019, we built out a new location for this school with an enrollment capacity of 40 students. This location increased our capacity to serve students from New Kent County all the way down to the City of Hampton. Shortly after opening the Peninsula School, we opened an additional Early Education Center to serve newly diagnosed toddlers out of this location.

Parents like Whitney G. are thrilled to have access to such high-quality autism services in the Peninsula region. "We live in a small town where there aren't many opportunities for children with autism. The Faison Center has given [my daughter] the chance to build on her life skills. Things like shopping for items she needs, practicing cleaning and organizing areas at school, and especially working on her communication skills have helped her become more independent. Without The Faison Center, she wouldn't have the chance to grow like that."

We are grateful for the opportunity to work with families and children with autism on our Peninsula Campus, and we are extremely thankful for all of those in that area who support our mission and all who we serve.

In addition to allowing us to serve more individuals, this campus has widened our research partnerships. Now, in addition to working with University of Virginia, Columbia University, and Kennedy-Krieger at Johns Hopkins, among others, we enjoy great working relationships with Old Dominion University and The College of William and Mary.



"My favorite part is knowing that there are people who care for my daughter with respect and dignity. They acknowledge her disability and treat her no different. The staff are true SUPERHEROES!" - Whitney G., Parent of Peninsula School student



"I don't think most people realize how life-changing the work we do with our students is for them and their families. Faison's school programs allow for so much growth in these kiddos' lives; it may not seem like much to a lot of people but it is huge to them. My students know I'm gonna be with them through thick and thin." - Kat S., a Faison Teaching Assistant in the EILC

The Faison Center Annual Report

Fiscal Year Ending June 30, 2023



Program Expenses	91.75%
Overhead Expenses	4.95%
Fundraising Expenses	3.30%



The Faison Center Operations (in millions)

Program Revenue	\$16.8
Faison Apartment Rental Income	\$0.7
Net Funding from Fundraising*	\$0.4
Program Expenses	(\$16.7)
Overhead Expenses	(\$0.9)

Net Fiscal Year Ending 06/30/2023	\$0.3
-----------------------------------	-------

*Capital campaign funding is not included

Financial information is provided following Generally Accepted Accounting Principles but is not yet audited.





Forward Into the Future

Campus Expansion. Service Enhancement.

Thank You to our Capital Campaign Donors who have made our campus expansion plans a reality!

8 Anonymous Donors
Eric and Meredith Albright
Allison Albright and
Tabitha Jett
Altria Companies
Employee Community
Fund
American Paper and
Twine Company
Will and Cindy Anderson
Armstrong Family Fund
Don and Colleen Bahr
Helen, Nicole and Rob
Balush
Bank of America
Charitable Foundation
Tim and Leah Behl
Scott and Nancy Belleman
Sean Bielawski and
Alexandra Mendez
Judith Haskell Brewer
Fund

Adriane Brousseau
Shirley & Morton Brown
Donor Advised Fund of
Richmond Jewish
Foundation
The Cabell Foundation
Jane Campbell
Mehmet Camurdan and
Yujie Shan
Daniel and Patricia Carr
Jean Childress
Bob Clark
Louise B. Cochrane
Foundation
Perry and Dianne Corsello
Jan Crowell
Andrew and Elizabeth
Crowley
Sue and Steve Davies
Duane and Janet
Deskevich
Dominion Energy

Robert S. and Alberta R.
Doochin
ECI Development
Services, LLC
Ann Chesley Edmunds
The Edmunds Family
Foundation
Paul and Debbie
Edmunds
Sterling and Nancy
Edmunds
Ernst & Young
Don and Lynne Faison
Eric and Christy Feiler
Chris and Whitney
Forstner
Chris and Renee Gilman
John and Diane Golden
Richard and Beth Grinnan
Flo and Tony Guzman
Agha Haider and Saba Naz
Chip and Julie Harris

Michael and Emily Henley
Paul and Holly Hoelting
Suzanne Madison Hogg
Amy Holland
Jim and Diane Hope
Hourigan Construction
Phil and Beth Howard
Lisa Hughes
Chitra Jain and Satya
Rangarajan
Susan Jones
Stanley and Barbara
Joynes
Stewart and Sandy Kasen
Bruce and Janet Kay
Alan Kirshner and
Deborah Mihaloff
Bradley and Mary
Kiscaden
The Klaus Family Fund
Philip W. Klaus and
Sandra Mihaloff

Mike and Kathy Laing
John and Libby Lewis
Ted and Mary Linhart
Lipman Foundation
Anne & David Long
Donor Advised Fund
of Richmond Jewish
Foundation
Phyllis and Stanley Magrill
Betsy and Tony Markel
Markel Corporation
Gary Markel Family
Fund of the Community
Foundation of Tampa
Bay
Steve and Kathie Markel
Alex and Kristen Martin
Darrell and Boozie Martin
Michael and Amy McCann
W. Brian McCann
William T. McCann, Jr.
Mike and Kathy McCracken

Paul and Lynn Melnick
Robert and Anne Methven
The Matthew & Genevieve
Mezzanotte Foundation
Marlene and Robert Mizell
Leonard and Barbara
Morris
Betty Moyer
James and Karen Murphy
William Murray
Junie and John Myers
National Financial
Services LLC
Jeremy and Jamie Noble
Andrew and Kim Norman
Ellen and Richard
November
Nunnally Charitable Lead
Trust
The Mary Morton Parsons
Foundation

Jonathan and Anne Marie
Perel
Dennis and Cindy Pryor
Dr. and Mrs. Michael
Ratner
Bob and Jan Reynolds
Virginia Sargeant
Reynolds Foundation
Jerry and Ann Samford
Bryan and Toni Sanders
William and Paula
Saunders
Cullen and Rosemary
Seltzer
Larry and Rosslyn Selzer
Stuart and Dawn Siegel
Smithfield Foundation
Paul and Kathryn Smoke
Special Care Janitorial Svc.
LLC
Leslie Stack and Frank
Rizzo

Wallace and Mary
Stettinius
Glenn and Kathleen
Stocks
Pam and Barry Stump
Morton G. and Nancy P.
Thalhimer Foundation
Gary and Janice Thomson
TowneBank
Michael and Andrea
Wassmer
Marcus and Carole M.
Weinstein
Weinstein Properties
Scott and Kate Whitehead
Richie and Jeanne Whitt
Rob and Dodie Whitt
Walter and Rebecca
Young



The Faison Fund: Honor Roll of Donors

Recognizing All Gifts Received 7/1/2022-6/30/2023
to the Annual Fund, Action for Autism and Aces for Autism.

\$25,000 and up

Abbott Family Foundation
Carolyn Abbott
Will and Cindy Anderson
BHE GT&S
Jean Childress
Dominion Energy
Paul and Debbie Edmunds
Alan Kirshner and Deborah Mihaloff
Markel Corporation
The U.S. Charitable Gift Trust

\$10,000 - \$24,999

Abbott Management, Inc.
Noel Abkemeier
Tim and Leah Behl
Sean Bielawski and Alexandra Mendez
Mehmet Camurdan and Yujie Shan
Daniel and Patricia Carr
Jeff and Jackie Congdon, Sr.
Andrew and Elizabeth Crowley
Wendy Drucker
Donald and Lynne Faison
Fidelity Charitable Gift Fund
Danny and Brenda Jones
Philip W. Klaus and Sandra Mihaloff
Jeremy and Jamie Noble
PGA Tour Charities, Inc.
Brad and Janet Sauer
Ward Scull
John and Carolyn Snow
Morton G. and Nancy P. Thalhimier
Foundation
TRUIST
WKH Solutions

\$5,000 - \$9,999

Armstrong Family Fund
Tiff and Kelly Armstrong
Dr. Kenneth Arndt
Jerry and Terry Bullard
Christian Family Foundation
Mark and Melissa Christian
Julia Chu
Perry and Dianne Corsello
Durham Foundation
The Edmunds Family Foundation
Ernst & Young
Jennifer Fagan
Tom and Susan Gayner
Gloucester Community Foundation
John and Diane Golden
Richard and Beth Grinnan
Flo Guzman
Robert Hatten
Andrea Hill
Neville and Susan Johnson

Kenneth and Grace Arndt Charitable
Fund
Sung Mi Kim
Jim Klaus
David Madren
Lenny Mandl
Michael and Amy McCann
Robert and Marlene Mizell
Leonard and Barbara Morris
National Exterminators, Inc.
Joseph Papa
Peninsula Community Foundation
Mike and Nancy Petters
Dr. and Mrs. Michael Ratner
Will and Kelli Ritter
Andy Sanborn
Schwab Charitable Fund
Wallace and Mary Stettinius
Troutman Pepper Hamilton Sanders
LLP
Keith and Greta Vander Vennet
Anonymous
Walsh Electric Co. Inc.
Scott and Kate Whitehead
Kathryne and Russell Yates
Robert and Dara Yeh
Sadler Brothers Oil Co., Inc.

\$2,500 - \$4,999

Randy and Carol Abbott
John W. Abernathy
Gerry and Kathleen Albanese
Roy and Ann Tyler Allen
Alethea Parker
Helen, Nicole and Rob Balush
Baskervill
Scott and Nancy Belleman
William and Victoria Brock
Crenshaw Realty
Duane and Janet Deskevich
William and Carol Downey
Sterling and Nancy Edmunds
The Jane and Arthur Flippo
Foundation
Royden and Martha Goodson
Anonymous
Gaye Griffin-Hill
Hamilton Beach
Glenn and Rebecca Harris
Chip and Julie Harris
Jim and Diane Hope
Hourigan Construction
Phil and Beth Howard
Stewart and Sandy Kasen
Bruce and Janet Kay
Keiter CPAs
Patrick and Christin Kennedy
Darrell and Betty (Boozie) Martin
Virginia Mathurin
Ed and Dana McKenna

Andrew and Kim Norman
Stephen and Donna Parker
Boyd and Kate Rawles
S&P Global
Scott and Meg Rivas Family Fund
Cullen and Rosemary Seltzer
Snead Family Foundation
Stepping Stones Foundation, Inc
Richard and Catherine Strayer
Pam and Barry Stump
Howell and Margo Wallace
The Waltie Fund
Warwick Plumbing and Heating Corp.
Richie and Jeanne Whitt
Walter and Rebecca Young

\$1,000 - \$2,499

Matthew and Elizabeth Abbott
Michael and Harriet Armstrong
John David Back
Gordon and Elizabeth Boyack
Douglas and Carol Braddock
C.T. Purcell Excavating, Inc
Church of Jesus
Complete Pest Management
John and Amy Daylor
Dominion Energy
Matt and Colleen Duffy
ECI Development Services, LLC
Virginia T. Forster
Gordon Gentry, Jr.
Britt and Susan Glisson
Mark and Ellie Gottwald
Pauline Gregorich
Michael Heaton
Braxton Hill
Eugene and Sidney Jordan
R&K Trees, LLC
Nathalie L. Klaus Charitable Trust
Barbara Kreuter
Mike and Kathy Laing
John and Libby Lewis
The Linhart Foundation
Ted and Mary Linhart
Virginia Maloney
Manchester Richmond Lodge 699
Alex and Kristen Martin
E.W. Muller Contractor, Inc.
James and Karen Murphy
William Murray
National Philanthropic Trust
Bill and Cassandra Oldham
Donald Patten
Dennis and Cindy Pryor
David and Betsy Richardson
Anonymous
Larry and Rosslyn Selzer
Patrick Shaffner
H. Robert Simmons
Brooks Smith
Robert and Candy Snyder

Special Care Janitorial Svc. LLC
Paul and Nancy Springman
William J. and Lydia J. Strickland
The London Company
Tim and Maureen Thompkins
Betty Thompson
TowneBank
USI Insurance Services, LLC
Chip and Virginia Wason
Dwight and Barbara West
The Whiting-Turner Contracting
Company
Cindy Williams
Alan and Deborah Witt
Henry and Virginia Woodhead
Tinsley and Mary Alice Yarbrough
Kelly Young

\$500 - \$999

Action Reaction Jiu Jitsu Academy
Amazon Smile Foundation
Wanda Austin
Beth Bailey and Bruce Green
Kathleen and Justin Barksdale
Carson Box
Katherine Bryant
Anonymous
Anonymous
Dominion Physical Therapy
Jeffrey Einsel
First United Methodist Church
Foundation
Harris Foundation
Jil and Hiter Harris
Philip and Isabel Hatchett
Anne Henry
Winston Hodges
Mike and Tammy Jones
Stanley and Barbara Joynes
Frank Kollmanserger
Michael Mason
The Milton M. Meyer, Jr. and Mildred B.
Meyer Foundation
Mark and Joni Nichols
Chris Ost
POOLHOUSE
Richmond Bridge Association
Jorge Salgado
Sheldon and Carmen Seltzer
Richard and Shirley Smith
Stacey Smith
Amy Thalhimier
The Floor Trader
Chitra Jain and Satya Rangarajan
Tokyo Market
Bill and Jane Weirich
Roger and Kim Williams
Scott Dillard

\$250 - \$499

Patrick Arbogast
Jessica Banton
Patricia Banton
Mr. and Mrs. Gary A. Barranger
Anonymous
Elizabeth Broderick
Thomas and Susie Byer
Cal and Pam Perrott Calligaro
City of Newport News Fire
Department
Cecelia Crouch
Robert and Amanda Crowell
Anonymous
Five Guys Properties, LLC
Traci Ford
Heidi Garcia
Catherine, James and Teddy Gregory
Wesley and Patsi Hall
Craig and Libby Heimark
Thomas and Anne Jefferson
Kendall Jones
Ryan and Sarah Katuzienski
Russell Kenwood
John and Patricia Kloke
Mary Spotswood and E. Hatcher
Crenshaw, Jr. Fund
Scott Miller
Mary Neale
Matthew Osborne and Jamie Dybdahl
Printing Wright Inc.
The Progressive Insurance Foundation
James and Deborah Sadar
Will and Abbie Sadler
Jerry and Ann Samford
Colby Schroath
Scott and Lilo Ukrop
Patricia M. Titus
Teri Toepke
Anne Tracy
Scott and Lilo Ukrop
United Way of South Hampton Roads
Oden and Debbie Warman
Rob and Dodie Whitt
Thomas and Ann Wilson
Ty Toepke

Up to \$249

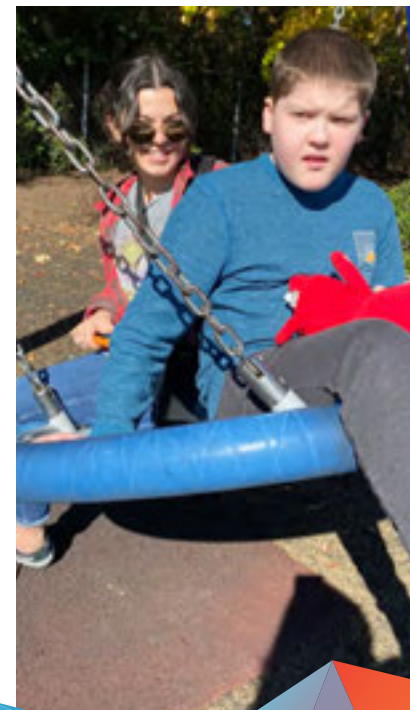
Peyton Adams
Harry and Anne Alferink
Martin and Anne Atwood
Ruth Baatnes
Dick and Happy Barnwell
Diane D. Becken
Marie and Warren Belfield
Elizabeth Bishton
Sarah Boyack
Carl and Cynthia Brakman
Clemens and Marjorie Bribitzer
Dr. Donald S. and Beejay Brown
Anonymous
Wendy N. Brown
Charles and Linda Catlett
Hugh and Karen Catlett
Charitable Family Fund LLC
Lisa and Tony Cirillo
Cathy Clark
Emily Cole-Jones
Bruce and Marguerite Corsello
George and Genie Crawford
Shellie Cummins
Nelson and Kathryn Cutler
Robert and Sheila Dann
Susan Davis
Donna Manning
Michael and Linda Drake
Margo Drucker
Taylor Easter
Frederick and Betty Elofson
Susan and David Farris
Jordan Ferrell
Susan F. Davis
Thomas B. Fisher
Chris and Jen Flinchum
Robert and Leslie Frank
Lisa Freeman
David and Debra Gardner
Robert and Hilda Garlock
Geoff McDonald & Associates, P.C.
David Gilmore
Tim and Amanda Good
Margaret Gouldin
The Greek Orthodox Ladies
Philoptochos Society Chapter 1097
Greg and Casey Severinghaus
Fred Hall
Karen C. Hamlett
Daija Henriques
Matt Hirschberg
Larry and Andrea Hogan
Dan Hurley
Irene H. Jennings
Elizabeth and Jim Jollay
Devon and Francesca Jones
Rick Vander Kaay
Alan and Lynn Katz
Paul and Kellie Kelley
Russell and Linda Kenwood

Lisa and Michael Kirby
Barry and Kathi Klein
Robert Kreps
Cathy Krinick
The Kurz Family
Stuart D. Lerner
Marilyn W. Lowenstein
Dan and Jennifer Loy
Edward Lubno
Robert and Linda MacCleave
Daniel Madren
Phyllis and Stanley Magrill
Andy Markel
Wendy McCoy
Tyler Miller
Anonymous
Brian Moore
Allen and Sarah Muglia
James Muir
Amanda Muncy
Caroline Nelson
Eli and Beth Newcomb
Allen and Lois Nichols
Kim Nicol
Karl Ost
Ingrid and Susan Parish
M. Parker
Steve Parker
Peter and Jane Partee

Allen and Eliza Peacock
Jonathan and Anne Marie Perel
Will Pile
James and Gail Plotkin
Julie A. Pollard
Jamie B. Ratner Rich
Anonymous
Charlotte Roberts
Samuel Roberts
Richard and Goree Robins
Claire and Bob Rosenbaum
Cristie Rosenberg
Chris Rudner
Craig and Lisa Sadrack
Saints Constantine and Helen Greek
Orthodox Cathedral
Alan N. Salsbury
Dan and Anne Schlussler
David and Anne Schwartz
John Jay and Gail Schwartz
Stephanie Seay
Lisa & John Seger
Joseph and Suzanne Seipel
Crisanda G. Shanks
The Sheltering Arms Circle of The
King's Daughters and Sons
Chris Sikorski
Charles Slate
SLH Law, LLC

Conway and Lyn Smith
Erin Smith
Spinnaker Consulting Group
Alloysius and Hazel Sullivan
Susan Bai
David Sweck
Justin Swisher
Francis and Sue Terminella
Mort Thalhimer III
Trevor and Lisa Klein
Christopher and Brook Tribble
United Way of Greater Richmond &
Petersburg
Susan Van Dyke
Ernest and Nancy Vaughan
Tony and Deborah Vincent
Justin Weis
White Orthodontics
Dr. and Mrs. Paul R. White
Cal and Katherine Whitehead
Joann Whitt
Anonymous
Dennis and Allison Wixted
Anonymous
Leslie Wrenn
YourCause, LLC
Stan Zimmerman
Tidewater Soil and Water
Conservation





Tributes

In Memory of Adam Williams
Patricia M. Titus

In Honor of Adeline
Charles Slate

For The Birthday of Alan Kirshner
Will and Cindy Anderson
Scott and Nancy Belleman
Morty Brown
Community Foundation of Tampa Bay
Andrew and Elizabeth Crowley
John Cullather
Michael and Linda Dinoff
Robert S. and Alberta R. Doochin
Drs. Ruth Hillelson and Terry Whipple
Bill and Audrey Fasy
Chris and Jen Flinchum
Mark and Barbara Foster
Becky Frank
Susan and Michael Gracik
Cynthia Green
Carl and Carolyn Kantor
Stewart and Sandy Kasen
Barbara Kreuter
Markel Corporation
Debra M. Markel
Elle and Richard November
Dennis and Cindy Pryor
Richmond Jewish Foundation
Kenny Salken and Wendy Kreuter
Phyllis Simons
Paul and Kathryn Smoke
Howell and Margo Wallace

In Honor of Alan Kirshner and Deb Mihaloff
Jean Childress

In Honor of Ben Ratner
Jamie B. Ratner Rich
Tinsley and Mary Alice Yarbrough

In Honor of Blake Vincent
Tony and Deborah Vincent

In Honor of Capital One's Pay it Forward Initiative
Kim Nicol

In Honor of Carolyn Abbitt
Robert and Amanda Crowell
William and Carol Downey
Robert Hatten

In Honor of Chris Ost
Emily Cole-Jones

In Honor of Christopher Corsello
Bruce and Marguerite Corsello
Schwab Charitable Fund

In Memory of Evelyn Ruth Sutherlin
Tidewater Soil and Water Conservation District

In Honor of Faison's Amazing Staff
Rachel Ernest
Glenn and Rebecca Harris

In Memory of Gary L. Clower
Wesley and Patsi Hall

In Honor of Hunter Burger
Larry and Andrea Hogan

In Honor of Isaac Michael Hannon
Spinnaker Consulting Group

In Honor of Jill Parker
Julie A. Pollard

In Honor of Liam Strickland
William J. and Lydia J. Strickland

In Honor of Markel Insurance Agricultural Division
Lisa and John Seger

In Honor of Mary Coleman
Katherine Bryant

In Honor of Melody Drisko
Anonymous

In Honor of Nosuk Kim
Philip and Isabel Hatchett

For The Birthday of Paige Edmunds
Roy and Ann Tyler Allen
Anonymous
Complete Pest Management
Jordan Ferrell
Chris Rudner
The London Company
Kathryne and Russell Yates
Kell Young
Walter and Rebecca Young

In Honor of Richard Davis
Anonymous

In Honor of Sarah Anne Seltzer
John and Diane Golden
Sheldon and Carmen Seltzer

In Honor of Scott and Kate Whitehead

Cal and Katherine Whitehead

In Honor of Steve Ernest

Hugh and Karen Catlett
Cathy Clark
Rick Vander Kaay
James and Deborah Sadar
Anonymous

In Honor of Suzanne M. Hogg

Lisa Freeman

In Honor of Sydney Johnson

Thomas and Ann Wilson

In Honor of Taylor Wixted

Denis and Allison Wixted

In Honor of The Faison Center's Teachers

Mehmet Camurdan and Yujie Shan

In Memory of Tony Guzman

Wendy N. Brown
George and Genie Crawford
John and Amy Daylor
Susan and David Farris
Fidelity Charitable Gift Fund
Chris and Jen Flinchum
Robert and Hilda Garlock
Catherine, James, and Teddy Gregory
Craig and Libby Heimark
Elizabeth and Jim Jollay
Alan and Lynn Katz
Lisa and Michael Kirby
Edward Lubno
Phyllis and Stanley Magrill
Andy Markel
Brian Moore
M. Parker
Charlotte Roberts
Claire and Bob Rosenbaum
Cristie Rosenberg
Alan N. Salsbury
David and Anne Schwartz
John Jay and Gail Schwartz
Paul and Nancy Springman
Trevor and Lisa Klein

In Honor of Tucker Naftzger

Anonymous



The Faison Center Board Members

- **Donald Faison, Jr. - Chair**
- Alan I. Kirshner - Chair Emeritus
- Paul C. Edmunds, II - Vice Chair
- John B. Lewis - Secretary
- Richard M. Davis, Jr.
- Duane A. Deskevich
- Lynne Faison
- Andrea L. Hill
- Jim Hope
- Chitra Jain
- Stanley K. Joynes, III
- Alex Martin
- William L. Murray
- John G. Myers, Jr.

The Faison Clinical Advisory Council

- Louis P. Hagopian, Ph.D., BCBA-D
- Melissa Nelson, MD
- Terry J. Page, Ph.D., BCBA-D



Graduation Time

**Congratulations to our 2023
graduating students!**

Amilleon Anderson
Elizabeth Angle
Sean Bamman
Kyle Birchett
Abby Brown
Caleb Cheely
Zoe Elias
Michael Gentry
Coleman Heirholzer
Kristine Ogden
Benjamin Ratner
David Rubenstein
Sarah Seltzer
Marquis Smith-Reynolds
Dev Trivedi
Nicky Walczak
Hayden Wheaton
Sean Wood
2 additional students



Thank You!

**On behalf of all of the
children and adults we
serve....Thank you!**



The Faison Approach

At The Faison Center, our mission is to give children and adults with autism and related challenges the best opportunity to improve their life's journey through evidence-based practice. We provide world-class services and programs through our unique lifespan model, which offers enriching opportunities from early diagnosis to adulthood. No matter when our services are needed, we are committed to improving the lives of the individuals we serve.



**faison
center**

Pioneering Possibility

for individuals with autism and their families since 1999

faisoncenter.org

The Faison Center

5311 Markel Road
Richmond, VA 23230

Phone: (804) 612-1947

Peninsula School at

The Faison Center

803 Diligence Drive, Suite 300
Newport News, VA 23606

Phone: (757) 223-0558