



faison
center

Annual Report 2020/2021





I am one of the few people in this world who has never had a Facebook page, Twitter account or Instagram account. The Faison Center, though, posts on all of these social media outlets. We like to share stories that will bring a smile to your face and, hopefully, reinforce why you support The Faison Center.

One day a teaching assistant in our Faison School asked why all of the posts on our social media were of students in our school politely sitting at a classroom table, or toddlers in our Early Education Center having fun together, or adults in our residential and day programs enjoying a group activity off campus. Needless to say, I was a bit confused. I could not imagine what was wrong with showing such images. The staff then commented that the pictures do not accurately reflect the day-to-day challenges faced by those we serve...and by the staff. Instantly, I understood the frustration—our posts celebrate the successes, but do not recognize the struggles.

This report celebrates many successes. Reading about our sponsored residential program that has changed the life of one of our young adults, learning about the impact our play areas have on toddlers and students, and seeing the progress at the new Early Education Center at our Newport News campus will, no doubt, leave you smiling. As you read through the following pages (and any of our social media posts), though, please remember that the successes we celebrate are made possible because of the extraordinary Faison staff. They do not have easy jobs as the vast majority of those who we serve struggle with self injury, aggression and other severe problem behavior. This creates a very difficult and challenging work environment for them. Yet, they remain dedicated to our mission, dedicated to the toddlers, students and adults with whom they work, and dedicated to each other.

This dedication produces the tremendous results that you see in the pictures of those in our programs laughing, playing, learning and enjoying life in the community.

I am so very grateful for our staff. Their hard work allows us to share stories of success that make us all smile.

I hope that you enjoy this year's Annual Report and, as always, thank you for your support of The Faison Center.

Sincerely,

W. Brian McCann
President & CEO

Contents

2. [Family Partner Program](#)
4. [The Power of Play](#)
7. [Peninsula Early Education Center](#)
8. [In Their Own Words](#)
9. [Faison Center Research](#)
10. [2020/2021 The Faison Center Highlights](#)
12. [Annual Report](#)
14. [The Faison Fund - Honor Roll of Donors](#)
19. [Tributes](#)
21. [Board of Directors](#)



Family Partner Program



“He has become his own person.”

Innovation, Independence, Inclusion. These three words describe all of The Faison Center's programs and the Family Partner program is a great example of these words in action. This residential program allows individuals who are more severely impacted by autism to live in a private home setting and receive the supports they need to live their lives, to become themselves and to be a part of the community.

Our Family Partner program embraces a natural time in life when young adults move out of their parent's home to pursue greater independence. Courtney K. knew that the time had come for her son, Reid, to pursue a more independent life. However, given the level of support that Reid needs, Courtney did not know if he would ever have the opportunity to live outside of their home.

Reid is 23 years old and had been a student at the Faison School for many years, graduating in 2020. Although Reid has very few verbal skills, he started saying “college” after his older brother left home to pursue an undergraduate degree. At first Courtney thought Reid wanted to visit his older brother. That was not the case. It became clear that Reid wanted to do what his older brother did—move out.

Courtney turned to Faison to see what residential options existed for Reid. “I trusted Faison, because we've been with them for so long and I knew that if it was a program that was sponsored by them, that it would be organized and safe, and we would love it,” said Courtney.

The Family Partner program matches adults with severe autism to live with another individual or individuals who are trained to provide whatever daily living supports are necessary in addition to recreational and social activities. When Courtney met with the team at Faison to discuss this program, she came prepared with two pages of notes on what would be the perfect match for Reid.

“I was thinking I'm never going to get this many things with the family partner we get matched with. So when we sat down with the Faison team, they asked what I thought were the main criteria for a family partner for Reid. I told them I actually had a pretty comprehensive list. It included that I would love for them to have already taught at Faison. If they're musically inclined or if they're in a band, it would be great. If they have a partner who is an elementary school music teacher, that would be even better. I was very specific about the things I wanted for Reid.”

Based on Courtney's list, The Faison Center paired Reid with a family partner named Kayen who, at the time, was a teaching assistant at the Faison School and, as a member of a local band, regularly incorporated music into his interactions with students. Courtney was extremely delighted, saying “The funny thing was everything matched! Everything!” As she jokingly added, “Except that I wanted them to live next door to me. That didn't work out...but that's probably for the best!”

The matching process is very thoughtful and purposeful to allow everyone involved to get to know each other, feel comfortable, and, ultimately, determine if the match is right. To begin, Kayen, Courtney and Reid met for dinner several times. Then Kayen and Reid started meeting at The Faison Center and going into the community with each other. The next big test was overnight stays. Finally, after six months, Reid moved in with Kayen.

When describing Reid's reaction to his newfound life, Courtney said “He was so excited. He was just overjoyed. We set up his whole room. And then he was like, ‘go home! We asked ‘What? Do you want to come home?’ He said ‘No, go home!’ We then realized he wanted us to leave him and go home. This is awesome because my biggest fear was that he wouldn't like it. But he was so happy. And he still is to this day.”

After 18 months, Courtney has been amazed by the difference the program has made in Reid's life, “He just looks so much older and grown-up, he has a really cool beard and he has these new cool funky glasses that I love. He has become more independent in picking out what he wants to wear. He has a much larger musical taste than he did when he was here. He's always loved music so it's really cool to see that he's learning all these new songs, and talks more than he did before. He has become his own person, which is not always something you think about when you have a child with autism.

He loves feeling like he's done the same thing that his brother did and leaving and going into college. So, it's been great for us, and really easy for him...although a little harder for me, but not as hard as I thought it would be.”

The Faison Center is proud that the innovation of the Family Partner program gives individuals like Reid the chance to live a fulfilling life at their level of independence with an emphasis on inclusion in the community.

[Learn more about the Family Partner program.](#)





The **POWER** of **PLAY**

For all of those who we serve at The Faison Center, play is not only fun, but it is also an important tool for learning. Six-year-old Azy loves attending the Peninsula School at The Faison Center in Newport News, but when he first arrived, he could not stand wearing his glasses. In fact, he refused to do so. Without them, of course, he had tremendous difficulty with any academic instruction. This all changed when the new playground came into the equation. Azy's teaching team decided to try rewarding him with playground time for keeping his glasses on. The reward worked! Azy quickly went from wearing his glasses for just 10 seconds to nearly 15 minutes! The power of play on display!

Playgrounds are an integral part of both the Richmond and Newport News campuses where teachers can implement curriculum designed to teach our students communication and social interaction skills in addition to various academic subjects such as math and science.

The Richmond campus has multiple areas that provide different opportunities for new experiences and physical activity: three playgrounds, the Flo and Tony Guzman Community Center and the Outdoor Learning Center. The swings, adaptable basketball hoops, swivels, balance beams, seesaw and vegetable garden in the two playgrounds on either end of Kirshner-Mihaloff Hall are extremely popular with all of our students. Students are quick to want to spend time in these spaces as a reward for meeting learning and self-management goals in the classroom.

The third playground, located at Markel Hall, is used by the toddlers in our Early Education Center. Having access to group activities on the playground inspires other skills that those who we serve in this program need to work on such as social, play and imitation skills. Filled with slides, a mini rock climbing wall and space to ride tricycles and throw balls, this playground has seen many of our youngest grow so quickly. One little friend of ours who was unable to express himself vocally now goes up to fellow classmates on this playground, calls their names and runs away to instigate a game of chase. Again, the power of play on display!

The Guzman Community Center offers 10,000 square feet of indoor space for play and learning. Our Adapted PE teacher, Nicole Rosen, developed a curriculum for the Guzman Community Center that incorporates a broad range of both individual and group activities. "I have developed lots of different options," says Nicole, "so that every student, irrespective of their physical ability, can find something that works for them and that they enjoy doing."



In addition to the physical education classes inside the Guzman Community Center, Nicole works with students in the Outdoor Learning Center. With large overhanging trees providing shade, dedicated walking paths winding throughout the space, and a centrally located sand pit, this area at the end of the Richmond campus contains a large deck overlooking a stream that is used as classroom space, multiple activity stations that encourage dynamic motor activity, and special features like a water flow system and splash tables that support our curriculum of exploration and discovery. The curriculum was designed to support the development of students and adults of all ages by incorporating the natural world into an exciting learning adventure. Although this space just opened in May 2021, it has quickly become the favorite spot on campus for most students.





Peninsula Early Education Center

At our Newport News campus, we recently moved the Peninsula School from its original location into a newly renovated space in order to triple enrollment. With that increase in enrollment, we knew we needed much more outdoor space. Today, the main playground at the Peninsula School is five-times larger than the old playground! Just as in Richmond, our Peninsula School staff are constantly finding ways to incorporate the play equipment into lesson plans and self-management goals.

The playground was used to help Azy learn to wear his glasses. He is just one of many students whose academic performance and skill sets have improved because of the school's creative programs with the playground. Without question, the playground is the most highly preferred environment on the Peninsula School campus.

Looking towards the future of the Peninsula School, Brian McCann, CEO of The Faison Center, said "As we continue to grow enrollment with students from Williamsburg down to Hampton and across the state line into North Carolina, we look forward to more and more students not only learning in this space, but learning because of this space. It is much more than just a playground!"



Following COVID-related delays in 2020, the Early Education Center in Newport News is now officially open! We welcomed our first student in January and Assistant Director for Early Education, Dr. Ashley Greer, is excited that several other youngsters are now in the process of enrolling.

Working with children ages 15 months to five years old, this program helps toddlers learn to, among other things, speak, walk, play, and socialize with peers. The program, which focuses on the entire family, also provides training to parents tailored to fit the family's needs.

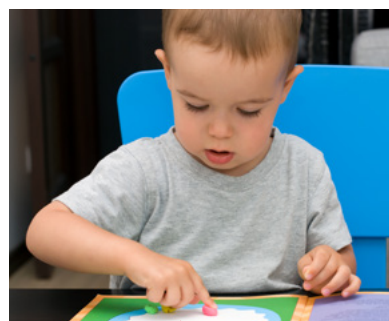
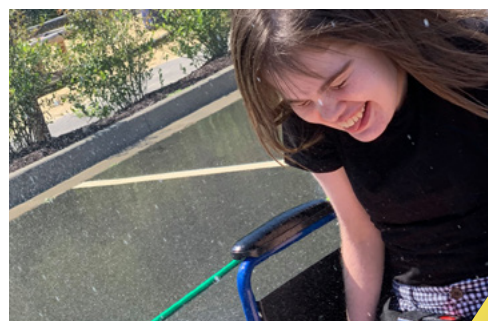
Our Early Education Center in Richmond partners with a private local preschool for children without disabilities that allows us to implement our inclusive instruction.

With classrooms for those we serve right next to the preschool classrooms, this partnership creates an inclusive early education model which provides our students the opportunity to participate in educational and social activities with their typically developing peers.

Whether for just a few minutes at a time or for a full day, the inclusion of our students with their preschool peers ramps up learning and provides age-appropriate behavior modeling. This inclusive learning also benefits typically developing youngsters, as their parents have reported that their children often show greater cooperation, patience, and empathy when in the dual enrollment program.

We are excited that this unique and effective partnership model will begin soon at the Early Education Center in Newport News.

[Learn more by hearing from one of our Early Education Center Grandparents.](#)



In Their Own Words...

Members of our community share stories of the central role The Faison Center plays in their lives.



Karen I. shares the story of her son getting his COVID vaccine

Faison partnered with KidMed to provide a Vaccine Clinic for children with autism. The nurses were trained to administer shots to children with autism and other related disabilities. For those students who wanted to attend the clinic, teachers at Faison worked with them on "vaccine comfort" to help them to understand the process and feel comfortable receiving the vaccine. The clinic was also open to any of their family members who had not yet been able to receive a COVID vaccine.

“ Shot #1 in the books! Thank you to The Faison Center and KidMed - Pediatric Urgent Care for teaming up to make this happen for our kiddos! These are the types of challenging things that Faison helps families with! I'm forever grateful when things can be pulled off my overflowing plate.

My son was definitely a bit wary of the nurse at first. During the wiping and rolling up of his sleeve he twisted away from her initially so his arm was up against the corner of the wall but he stayed super safe. Then he stood up and she got it done. When she finished up, he actually asked her for some tickles!



Nick lives in the Faison Residence and talks about the Rideshare App

The Faison Center's Adult Services worked with Ginger Belongia, an Occupational Therapy Doctoral student, to pilot her Safe Rideshare Program at the Faison Residence. The program focuses on the challenges adults with autism and other developmental disabilities face in getting around in the community and the potential for increased independence through the use of rideshare services like Lyft and Uber. [Learn more about Nick's Rideshare experience here.](#)

“ I have a job at Hobby Lobby as a warehouse worker. Faison taught me how to use the Pulse and Lyft to get home from work every night. Faison staff showed me how to download the app on my phone and set it up.

It's called Rideshare and it is specifically for people with disabilities. Apart from work, I use it to go to my parents' house or if I have to go somewhere on my own.

It helps me to be more independent.



Faison Center Research: Impacting Autism Around the World

Another unique aspect of The Faison Center is the amount of research we conduct on our campuses and publish in peer reviewed journals. We have been recognized as the most published non-university affiliated lab in the country in the field of Organizational Behavior Management, an area of behavior analysis. We are also proud of these recent research projects:

- Published in the *Journal of Autism and Developmental Disabilities* research with Old Dominion University regarding the Quality of Life of families of children with autism.
- Published in the *Journal of Applied Behavior Analysis* research with Kennedy-Krieger Institute at Johns Hopkins and University of Maryland Baltimore County regarding ways to optimize learning by children significantly impacted by autism.
- Published in the *Journal of Organizational Behavior Management* research regarding safety protocols and protective clothing and equipment for staff when working with students with severe problem behaviors.
- Published in two journals, *Education and Treatment of Children* and in *Behavior Analysis Research and Practice*, research regarding job skills training for teens with autism.
- Research in progress with a provider in Italy regarding increasing leisure skills for adolescents with autism.
- Research in progress on Richmond campus regarding effective ways to help students with autism tolerate getting shots, such as the COVID vaccine.



2020/2021 The Faison Center Highlights



JULY 2020

Faison's adult community always enjoys **movie night**. This month we watched Disney's "Onward" in the Guzman Community Center.



AUGUST 2020

Both our Richmond and Newport News campuses **reopen to school students** for in-person learning.



SEPTEMBER 2020

The **Safe Rideshare app** launches after being piloted at the Faison Residence. The app helps adults with autism independently navigate their communities by increasing their confidence in rideshare services like Lyft and Uber.



OCTOBER 2020

Faison's virtual **Halloween Spooktacular** was a big hit with all our students!



NOVEMBER 2020

Peninsula School celebrates Dominion's support of our **new playground**.



DECEMBER 2020

Faison and **UVA's Curry School** launch a joint research project using our Early Education Center to identify the skills youngsters need to thrive in inclusive environments.



JANUARY 2021

Peninsula School's **Early Education Center opens**.



FEBRUARY 2021

COVID vaccinations continue to roll out on campus for Faison's Adult Services.



MARCH 2021

Style Weekly covers a story about one of our Faison families and how their daughter Joy was able to continue receiving behavioral support throughout the pandemic in our Early Education Center.



APRIL 2021

Faison welcomes visitors to campus for the first time in a year during a series of small socially distanced receptions honoring sponsors during **Action for Autism Month**.



MAY 2021

The **Outdoor Learning Center opens** enabling Faison's children and adults to experience nature through an interactive outdoor learning space.



JUNE 2021

Faison's Weekly Adventure Club restarts with our community partner, Beyond Boundaries. Students and adults are excited to step out of their classrooms and again enjoy community-based experiences.

The Faison Center Annual Report

Fiscal Year Ending June 30, 2021



Program Expenses	81.87%
Overhead Expenses	10.4%
Fundraising Expenses	1.79%
Debt Service Reduction	4.75%
Infrastructure Improvements	1.19%

The Faison Center Operations (in millions)

Program Revenue	\$17.5
Faison Apartment Rental Income	\$0.8
Net Funding from Fundraising*	\$0.4
Program Expenses	(\$15.6)
Overhead Expenses	(\$1.9)
Debt Service Reduction	(\$0.9)
Infrastructure Improvements	(\$0.2)
Net Fiscal Year Ending 06/30/2021	\$0.1

*Capital campaign funding is not included

Financial information is provided following the Generally Accepted Accounting Principles.



The Faison Fund - Honor Roll of Donors

Recognizing All Gifts Received 7/1/2020-6/30/2021 to the Annual Fund, Action for Autism and Aces for Autism. Gifts to Faison's Forward into the Future campaign will be recognized at the close of the campaign.

\$25,000 and up

Dominion Energy
Paul and Debbie Edmunds
Alan Kirshner and Deborah Mihaloff
Markel Corporation
The U.S. Charitable Gift Trust

\$10,000 - \$24,999

Abbutt Family Foundation
Carolyn Abbutt
AECW Fund of The Community
Foundation for a greater Richmond
Will and Cindy Anderson
Dr. Kenneth Arndt
BB&T | SunTrust, now Truist
Daniel and Patricia Carr
The Community Foundation for
a greater Richmond
Davenport & Co.
Donald and Lynne Faison
The Gordinier Family
Don and Ann Hall
Danny and Brenda Jones
Lloyd and Tracy Little
Peake Law Group PC
Brad and Janet Sauer
Paul and Kathryn Smoke

\$5,000 - \$9,999

John W. Abernathy
Tim and Leah Behl
Christian Family Foundation
Perry and Dianne Corsello
Duane and Janet Deskevich
Ernst & Young
Jim and Susan Hope
Phil and Beth Howard
Joe Montgomery and The Optimal
Service Group of Wells Fargo Advisors
Philip W. Klaus and Sandra Mihaloff
Nathalie L. Klaus Charitable Trust
Langley Federal Credit Union
Langley for Families Foundation
Leonard and Barbara Morris
Jeremy and Jamie Noble
Anonymous
Dr. and Mrs. Michael Ratner
John and Carolyn Snow
The Answer Brewpub
Gary and Janice Thomson
Troutman Sanders LLP
Robert and Dara Yeh

\$2,500 - \$4,999

Gerry and Kathleen Albanese
Artcraft Management, Inc.
Atlantic Union Bank
Baskervill
Scott and Nancy Belleman
Nelson and Kathryn Cutler
Fidelity Charitable Gift Fund
The Jane and Arthur Flippo Foundation
Hourigan Construction
Hunton Andrews Kurth LLP
Interline Brands
Jackson Lewis P.C.
The West End Jaycees
Mike and Kathy Laing
McGriff Insurance
National Philanthropic Trust
Old Point National Bank
Old Point Trust and Financial Service
Stephen and Donna Parker
Dennis and Cindy Pryor
Ratner Law
Boyd and Kate Rawles
Cullen and Rosemary Seltzer
Snead Family Foundation
Christopher and Sara-Ellen Snow
Stepping Stones Foundation, Inc
Morton G. and Nancy P. Thalheimer
Foundation
TowneBank
Howell and Margo Wallace
Walsh Electric Co. Inc.
The Waltie Fund
Warwick Plumbing and Heating Corp.
West Second Charitable Lead Annuity
Trust
Thomas and Ann Wilson
WKH Solutions
Walter and Rebecca Young

\$1,000 - \$2,499

Abbutt Management, Inc.
Davey Ahearn
Roy and Ann Tyler Allen
Amazon Smile Foundation
Bayport Credit Union
BHE GT&S
Douglas and Carol Braddock
C.A. Barrs Contractor, Inc.
C.T. Purcell Excavating, Inc
Douglas and Paulette Chesson
Church of Jesus
Coastal Medical and Psychiatric Services,
Inc.
Collegiate Student Council
Commonwealth of VA Campaign
Anonymous
Wendy Drucker
Employment Resources, Inc.
John and Rose Garrett
Britt and Susan Glisson
John and Diane Golden
Mark and Ellie Gottwald
Nieves Guzman
Glenn and Rebecca Harris
Isabel Duncan Hatchett Foundation
Robert Hatten
Lisa Hughes
Jose Iregui
Mike and Tammy Jones
Juno Financial Group
JWS Associates
Keiter CPAs
R&K Trees, LLC
Sung Mi Kim
Jim Klaus
Barbara Kreuter
Robert and Rhonda Laufer
Barbara Leggett
Rebecca D. Leggett
William Lehm
John and Libby Lewis
The Linhart Foundation
Livewire, LLC
Virginia Maloney
Darrell and Betty (Boozie) Martin
W. Brian McCann
Michael and Amy McCann
Scott McNeill
Gerardo and Sharon Mendez-Picon
E.W. Muller Contractor, Inc.
Dian Munick
David Nagle
National Exterminators, Inc.
PGA Tour Charities, Inc.
Tup and Sagle Purcell
Pamela Rios
Schwab Charitable Fund
Scott and Meg Rivas Family Fund

Patrick Shaffner
Charles Spencer
Jennifer Stevens
William J. and Lydia J. Strickland
Pam and Barry Stump
Wendy C. Drucker
Betty Thompson
Richard and Alice Tilghman
TNT Automotive Leasing Ltd
United Jewish Community of the Virginia
Peninsula Endowment, Inc
Frank and Lucille Wagner
Chip and Virginia Wason
Anonymous
Wegmans Food Markets, Inc.
West Creek Financial
Henry and Virginia Woodhead
Charles and Susannah Wornom
Tinsley and Mary Alice Yarbrough

\$500 - \$999

Fred Andrews
Joshua and Susan Bennett
Norbert and Kathy Bliley
Bill Crawford and Marilyn Bota
Anonymous
Jeffrey Einsel
First United Methodist Church
Foundation
Royden and Martha Goodson
Deck Hankins
Harris Foundation
Anne Henry
Thomas and Anne Jefferson
Eugene and Sidney Jordan
Kaufman & Canoles
Kersey, Sealey, Clark, & Associates
Rebecca Kleinhample
Jeff and Anne Lamb
Princess Leggett
Martin-Star Cabinetry & Design LLC
William T. 'Billy' McCann, Jr.
Aaron and Christina McClung
Peter and Lisa Mertz
The Milton M. Meyer, Jr. and Mildred B.
Meyer Foundation
Midas Cares Program
Thomas and Beverly O'Bryan
Peninsula Community Foundation
Richmond Bridge Association
Sheldon and Carmen Seltzer
H. Robert Simmons
Kyo and Meehi Song
Spy Rock Real Estate Group
Frances Sykes
David Taylor
Patricia M. Titus
Joseph Torrence
The United Way of the Virginia Peninsula
Bill and Jane Weirich
Anonymous

\$250 - \$499

Michael and Harriet Armstrong
Wanda Austin
Available Storage Co., Inc.
Ali Baalbaki and Darine Moukallad
John David Back
William and Martha Bradley
Randy and Susan Bryant
Jerry and Terry Bullard
Ryan J. and Heidi H. Coker
Crenshaw Realty
Robert and Sheila Dann
David and Linda Dellinger
Todd and Kelly Domaleski
Frederick and Betty Elofson
Lynne J Fiscella and John Semmes
Carey and Joseph Flannery
Pauline Gregorich
Guanfu and Ingmar Haffke
Harrison and Lear, Inc.
Paul and Holly Hoelting
Suzanne Madison Hogg
Penelope B. Holladay
Andrew and Teri Iverson
Boguslaw and Joanna Kalata
Patrick and Alice Kennedy
The Kurz Family
Courtney M Malveaux
Neely A. Markel
Scott Marson
Mary Spotswood and E. Hatcher
Crenshaw, Jr. Fund
Robert and Anne Methven
LaShawn Moore
P. Craig Moore
Mr. Paul Sheldon
Mark and Joni Nichols
Donald Patten
Allen and Eliza Peacock
Penelope Holladay Charitable Fund
Pomoco Auto Group
Chris Rudner
Irvin and Linda Seeman
Spinnaker Consulting Group
Stihl
Stillwater Homes, Inc.
Scott and Lilo Ukrop
Bryan Wade
Oden and Debbie Warman
Sam and Sandra White
Quentin and Elizabeth Woodhead
YourCause, LLC



The Faison Fund - Honor Roll of Donors

Recognizing All Gifts Received 7/1/2020-6/30/2021 to the Annual Fund, Action for Autism and Aces for Autism. Gifts to Faison's Forward into the Future campaign will be recognized at the close of the campaign.

Up to \$249

Matthew and Elizabeth Abbitt
 Nick Ackerman
 Ken Aducci
 David and Mary Ahearn
 Anonymous
 Martin and Anne Atwood
 Mikey Citrus
 Dick and Happy Barnwell
 Mr. and Mrs. Gary A. Barranger
 Tom and Sue Ellen Billups
 Kevin Bishop
 Elizabeth Bishton
 Bill Booth
 Tripp and Kamila Bowles
 Carl and Cynthia Brakman
 Elizabeth Broderick
 Robert and Patricia Brooks
 Anonymous
 Doug and Susan Burgoyne
 Mike Burnett
 Anonymous
 Patrick Carlucci
 Robert Cataldi
 Steve Chafin
 Rev. James Chambers
 Linda Chambers
 Charitable Family Fund LLC

Jean Childress
 Anonymous
 Loren Constantino
 Thomas and Sandra Copler
 Bruce and Marguerite Corsello
 Susan Cottom M Ed.
 Anonymous
 Laura M. Crank
 Cecelia Crouch
 Davis & Associates, PC
 Sarah Davis
 Anonymous
 Michael Dinoff
 Dixon Golf
 Sterling and Nancy Edmunds
 Frank and Sandra Engel
 Julie Engel
 Ian Fagan
 Holly Faison
 Susan F. Davis
 Robert and Leslie Frank
 Heidi Garcia
 Robert and Hilda Garlock
 Anonymous
 William and Tamela Gordon
 Susan and Michael Gracik
 Craig and Heather Hannon
 Joseph M. Harmon
 Harris Teeter LLC
 Myra Jane Harris

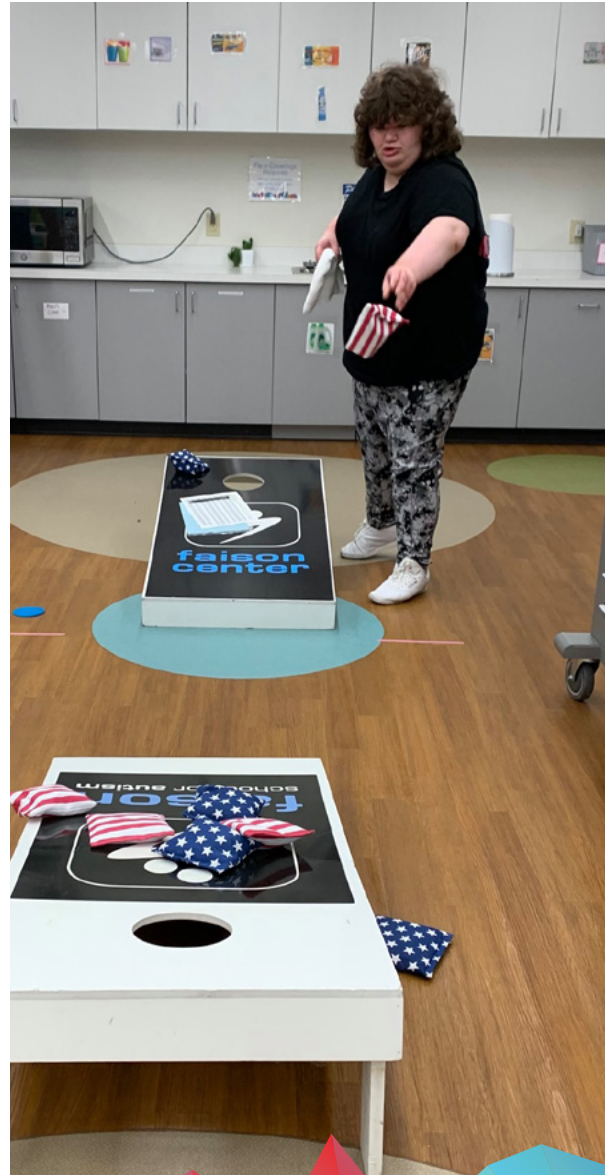
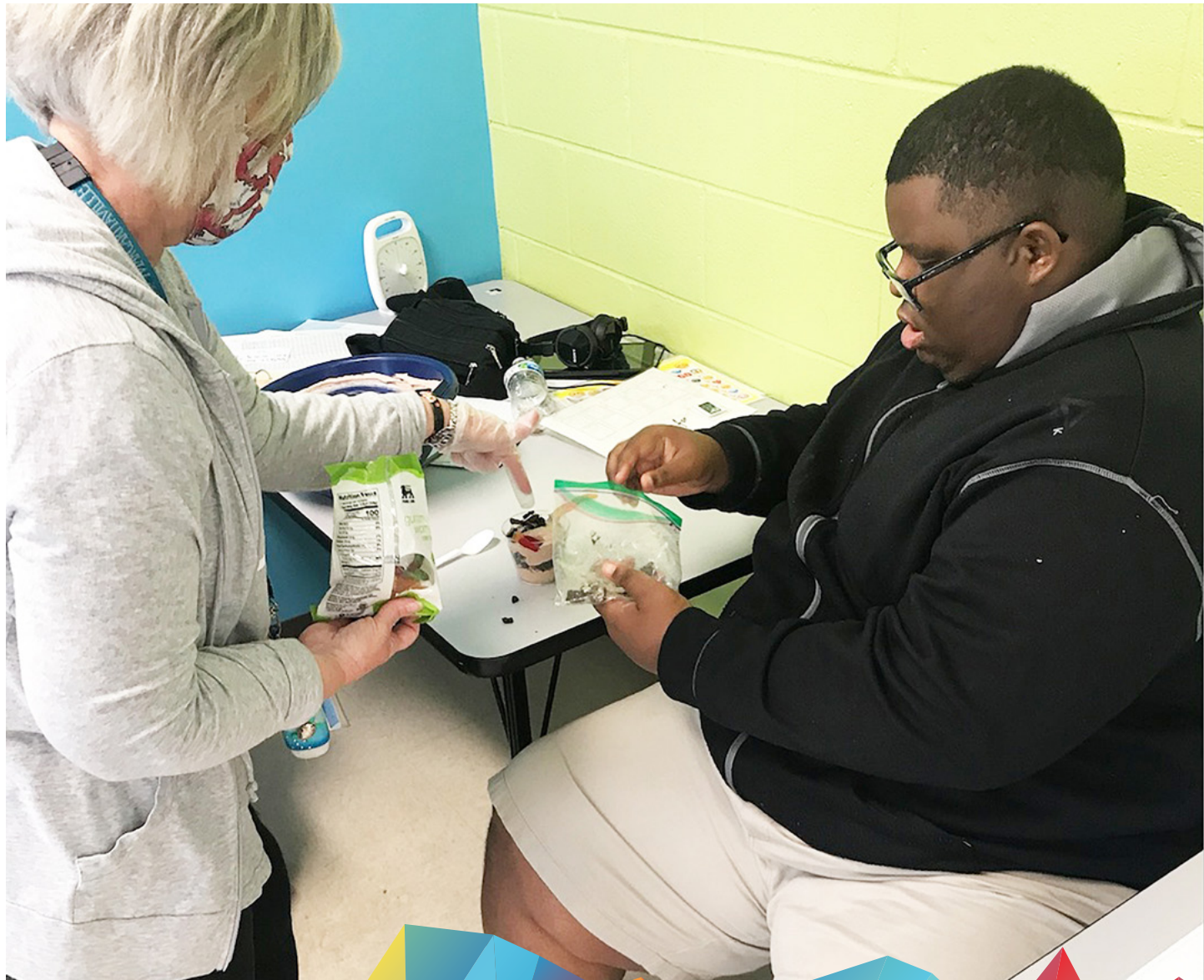
Richard and Amanda Hart
 David and Margene Hartsough
 Lynn Hawkins
 Susan Herzick
 Jeff and Anne Hill
 Stephanye Hill
 Mark and Margaret Hilldrup
 Matt Hirschberg
 Larry and Andrea Hogan
 Carol Duvall Holmes
 Mike and Joslin Hultzapple
 Charles and Adell Hunter
 Suzette Hutchens
 Matt Hyatt
 Diana H. Jackson
 Betty Johnson
 Clarence Johnson
 Ryan Johnson
 Devon and Francesca Jones
 Kendall Jones
 Stanley and Barbara Joynes
 Jason Kaiser
 Mike and Jill Keech
 Jane Kingsley
 Everett Kohler
 Robert Kreps
 Lou Ladson
 Robert and Vicki Lanier
 St. George and Ann Lee
 Rob Lefkowicz

Anonymous
 Dr. Wayne and Dr. Rebecca Lett
 Lincoln Surveying
 John Link
 Loraine L. Lobe
 George Lopez
 Stanley and Phyllis Magrill
 Lois Manes
 Mason, Vernon and Debra
 Daniel McCarty
 MCJ Legacy Planning, LLC
 John and Judith Mills
 Anonymous
 Anonymous
 Ashleigh R. Moody
 Allen and Sarah Muglia
 James and Karen Murphy
 Frances S. Neal
 Mary Neale
 Eli and Beth Newcomb
 Megan and Billy Newman
 Allen and Lois Nichols
 Janet and Bill Norris
 Ellen and Richard November
 Jennifer Olson
 Matthew Osborne and Jamie Dybdahl
 Chris Ost
 Karl Ost
 Frank and Jeannine Paciella
 Travis Page
 Phil and Yungju Pak
 Jonathan and Anne Marie Perel
 Karl and Linda Peterson
 Elizabeth B. and James A. Pettit, Jr.
 Pitney Bowes
 James and Gail Plotkin
 Kevin Price
 PSA Parent-Teacher Organization

Jamie B. Ratner Rich
 John Page and Susan Rawlings
 Sarah H. Richardson
 Bob and Judy Riley
 Charlotte Roberts
 Richard and Goree Robins
 William Rohrer
 Saints Constantine and Helen Greek
 Orthodox Cathedral
 Jorge Salgado
 Dan and Anne Schlussler
 Eric and Michele Schmude
 David and Anne Schwartz
 Lisa & John Seger
 The Sheltering Arms Circle of The King's
 Daughters and Sons
 Anonymous
 SLH Law, LLC
 Barbara Smith
 Jan and Cindy Smith
 Rusty Smith
 Ryan Stumpf
 Tall Poppies Freelance Writing LLC
 Target Corporation
 Edith C. Taylor
 Benjamin Terry
 The Greek Orthodox Ladies Philoptochos
 Society Chapter 1097
 DeWitte T. Thompson
 McNier and Nancy Tilman
 Tokyo Market
 John Tompkins
 Christopher and Brook Tribble
 Ashley and Joel Turner
 Uncle Russ' Dockside Seafood Market
 United Way of Greater Richmond &
 Petersburg
 Valley Road Vineyards, LC

Susan Van Dyke
 Ernest and Nancy Vaughan
 Tony and Deborah Vincent
 Ginger and Martin Webber
 White Orthodontics
 Dr. and Mrs. Paul R. White
 Joann Whitt
 Dennis and Allison Wixted
 Anonymous
 Robert and Amanda Woodrum
 Thomas Yambrick





Tributes

In Memory of Richard Abbitt
Dick and Happy Barnwell

In Honor of Jake Acciarito
Elisabeth Brittain

In Honor of Kyle Aldridge
Mark and Margaret Hilldrup
Mike and Joslin Hultzapple
Jerry and Terry Bullard

In Honor of Cindy and Will Anderson
Alan Kirshner and Deborah Mihaloff

In Honor of Lindsay, Jason, and Oliver Belnick
Alan Kirshner and Deborah Mihaloff

For the Birthday of Joaquin Bielawski-Mendez
Everett Kohler

In Honor of Joaquin Bielawski-Mendez
Gerardo and Sharon Mendez-Picon

In Honor of Hunter Burger
Larry and Andrea Hogan

In Honor of Christopher Corsello
Ginger and Martin Webber

In Honor of John Ellis Cottom
Susan Cottom

In Memory of Connie Cowardin
Joann Whitt

In Honor of Ty Dorion
The Benevity Community Impact Fund

In Honor of Melody Drisko
Anonymous

In Honor of Paige Edmunds
Daniel and Patricia Carr
Myra Jane Harris
Roy and Ann Tyler Allen
Sterling and Nancy Edmunds
Chip and Julie Harris
Walter and Rebecca Young
Jan Crowell

In Honor of The Edmunds Family
Chris Rudner

In Honor of Brittany Faison
Alan Kirshner and Deborah Mihaloff

In Honor of Brooke Faison
Alan Kirshner and Deborah Mihaloff

In Honor of Donald and Lynne Faison
A. Nieves Guzman, III
Alan Kirshner and Deborah Mihaloff

In Honor of The Faison Center's Teachers
Mehmet Camurdan and Yujie Shan

In Honor of The Faison Residence Staff
Nick Zweerink

In Honor of Catherine and James Gregory
Alan Kirshner and Deborah Mihaloff

In Honor of Tommy Handley
Rebecca Kleinhample

In Honor of Linda Lee Johnson / Shelly Blum
Betty Johnson

In Honor of Ben Kim
Lou Ladson

In Honor of Laura, Nick, Owen, and Nora Kirby
Alan Kirshner and Deborah Mihaloff

In Honor of Alan Kirshner and Deb Kirshner Mihaloff

Donald and Lynne Faison
Jean Childress

For the Birthday of Philip W. Klaus and Sandra Mihaloff

Irvin and Linda Seeman

In Honor of Kathi, Barry, and Matthew Klein

Alan Kirshner and Deborah Mihaloff

In Memory of Jack Kreuter

Barbara Kreuter

In Honor of Carter Joseph Ledford

Ann Schimanski
Amanda Simons
Barbara Ledford
Elisabeth Brittain

In Honor of Mason Lester

Anonymous

In Memory of John Maloney

Tripp and Kamila Bowles

In Honor of Ruffin Manning

H. Robert Simmons

In Honor of Markel Insurance Agricultural Division

Lisa & John Seger

For the Birthday of Jon Markiewicz

David and Anne Schwartz

In Honor of T.J. and Molly Mascia

Mike Burnett

In Memory of Michael H. McCann

William T. 'Billy' McCann, Jr.

In Celebration of Nate Melbourne

Ryan Stumpf

In Memory of Mildred and Milton Meyer

Richard Michael and Roberta Meyer

In Honor of Isaac Michael Hannon

Craig and Heather Hannon

In Memory of Jim Mihaloff

Robert and Hilda Garlock
Jim Klaus
Michael Dinoff
Michael and Harriet Armstrong
McNier and Nancy Tilman
Paul and Kathryn Smoke
Carol Duvall Holmes
Loraine L. Lobe
Stanley and Phyllis Magrill
Ashley and Joel Turner

In Honor of Ben Ratner

Dr. and Mrs. Michael Ratner
Vicki C. Ratner

In Honor of Meghan Riley

Bob and Judy Riley

In Honor of Calvin Ritter

Will and Kelli Ritter

In Memory of Gilbert Rosenthal

Scott and Nancy Belleman

In Memory of Bertha Seay

Lynn Hawkins
Edith C. Taylor
Jan and Cindy Smith
William and Tamela Gordon
Lincoln Surveying

In Honor of Sarah Anne Seltzer

John and Diane Golden
Sheldon and Carmen Seltzer
Cullen and Rosemary Seltzer

In Honor of Liam Strickland

William J. and Lydia J. Strickland

In Memory of Aloise VanZant

Pam and Barry Stump

In Honor of Blake Vincent

Tony and Deborah Vincent

In Honor of Adam Warman

Oden and Deborah Warman

In Honor of Taylor Wixted

Dennis and Allison Wixted

In Honor of Terry Deane Young

Henry and Virginia Woodhead



The Faison Center Board Members

- **Donald Faison, Jr. - Chair**
- Alan I. Kirshner - Chair Emeritus
- Paul C. Edmunds, II - Vice Chair
- John B. Lewis - Secretary
- Richard M. Davis, Jr.
- Duane A. Deskevich
- Lynne Faison
- Chitra Jain
- Stanley K. Joynes, III
- William L. Murray
- Alex Martin
- John G. Myers, Jr.
- Lucille Wagner

The Faison Clinical Advisory Council

- Dr. Louis Hagopian, PhD, Director of the Neurobehavioral Unit, Department of Behavioral Psychology, Kennedy Krieger Institute
- Dr. R. Douglas Greer, Professor of Psychology and Education, Teachers College at Columbia University
- Melissa B. Nelson, M.D., Pediatric Associates of Richmond and Fellow, American Academy of Pediatrics
- Terry J. Page, PhD, BCBA-D
- Joshua K. Pritchard, PhD, BCBA-D, Southern Illinois University





**faison
center**

Pioneering Possibility

for individuals with autism and their families since 1999

5311 Markel Road
Richmond, VA 23230

Phone: (804) 612-1947
Fax: (804) 612-1955

faisoncenter.org